



## Vessel Inspection Plug VIP



### Inspection Plug

- Helps to prevent Corrosion under Insulation (C.U.I.)
- The V.I.P. makes non-destructive inspection economical
- Reduces inspection costs/ time
- Weather-tight seal
- High temperature silicone plug
- Insulation plug 5" allows for even easier/faster inspections! (last page)



### V.I.P. - Inspection Plug

#### The problem

Moisture in insulation systems leads to deterioration of insulation and corrosion of vessel or pipe, thus causing major problems. Inspection of insulation and vessel on a regular basis is essential to prolong lifetime of system. Often the metal jacketing is damaged due to foot traffic, disrupting the water-seal of the jacketing. Just cutting an opening in jacketing and sealing off with tape is not a durable solution and can cause many problems. Also other handmade inspection hatches using hinges and screws are not always practical and economical.

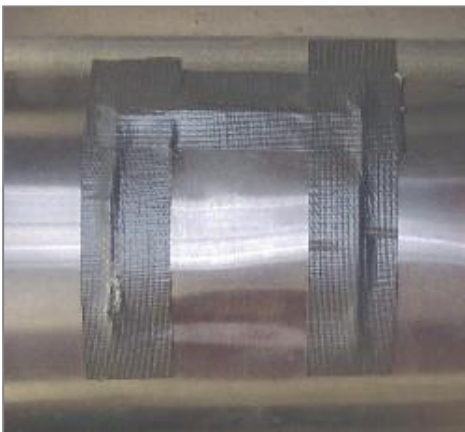
#### The Solution

The best way to inspect for Corrosion Under insulation (C.U.I.) in a non-destructive way, is the V.I.P. (Vessel Inspection plug) Available in two standard types 2½” and 5”. (Hydraulic Punch Drive and tool-head for easy installation can also be provided). The V.I.P. also provides possibility for NDE measuring thickness of pipe/vessel walls.

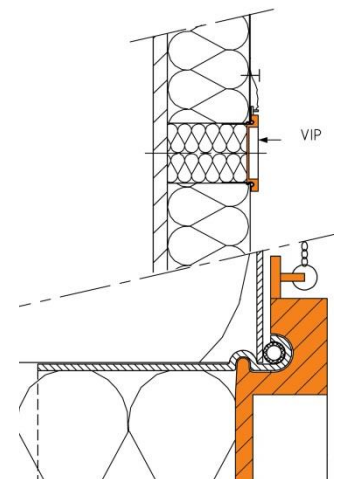
#### Economic benefits of the V.I.P. Inspection Plug

- Reduces inspection costs and time
- Provides ready access for inspection with minimum exposure to vessel insulation
- High visibility and provides a consistent inspection point ensuring future inspections are taken at same location
- Maintains a weather-tight seal to protect insulation
- High temperature silicone plug provides long service life
- For use in ambient/ hot installations

**Problem**



**Solution**





### Installing the V.I.P.

1. Cut hole through insulation jacket corresponding with plug-size to be installed.
2. Remove insulation and clean external surface.
3. Slide rubber "O"-ring over aluminium flange.
4. Insert flange (with "O"-ring applied) into hole on vessel insulation.
5. Insert hydraulic tool into flange. Close valve on tool. Make sure tool is level.
6. Pump handle approximately 5 times. Open the valve. Remove the tool.
7. Replace insulation into hole, insert V.I.P. Plug into hole.
8. Make sure plug is fully seated by depressing centre of plug firmly with thumb or fingers.
9. Fix toggle onto cladding with a selftapping-screw
10. Plug is now correctly installed and ready for periodic vessel inspection operation.

### Specifications

Sizes	2½" and 5"
Plug material	Std. MTL 40 Durometer silicone rubber
Temperature range	-60°C. to + 260°C
Std. Colour	Orange
Eyelet Material	5052 Aluminium

### Insulation plugs 5"

Insulation plugs 5" can be ordered in addition to 5" VIP's. The insulation plugs are accommodated with a loop making them easily removable during inspection. After inspection the insulation plug can be put back in place and the VIP can be refitted.

### Specifications

Sizes	Diameter: 5" Depth: 100 mm or 150 mm
Material	Temtex Q-14/PTFE glass fabric filled with mineral wool
Temperature range	For application temperatures up to 260 °C

### System advantages of VIP's in combination with insulation plugs:

- Reduce risk of losing insulation material around VIP's
- Maintain insulation value
- Facilitate and speed up CUI and wall thickness measurements

